



**YOU COULD CHOOSE
NOT TO READ THIS BROCHURE,
BUT THAT WOULD BE KIND OF
LIKE CHOOSING NOT TO READ THE
END OF A REALLY GOOD BOOK.**
.....
(Spoiler alert: The really good stuff lies ahead.)



LEARN IT WELL.



KEEP IT ALWAYS.

At Berry, your

**ACADEMIC
EXPLORATION,
PERSONAL
GROWTH**

and

**PROFESSIONAL
DEVELOPMENT**

will be carefully connected
and constantly deepened through
mentorship and reflection.

*This makes them practical
(and purposeful).*

Which makes them last.

6

ACADEMICS

Advising, faculty, majors and minors

8

THE BERRY JOURNEY

Our guided four-year experience

10

A CULTURE OF MENTORSHIP

Guides for the rest of your life

14

THE WORLD'S LARGEST CAMPUS

Unique facilities, many ecosystems

16

LIFEWORKS

Eight semesters of guaranteed paid
professional development

18

LIFE AT BERRY

Clubs, activities and athletics

20

OUTCOMES

Our graduates' success

22

NEXT STEPS

Admission, financial aid,
scholarships and visiting



**IN 1902, BELIEVING
THAT A QUALITY
EDUCATION SHOULD
BE AVAILABLE TO ALL,**

our founder, Martha Berry, started a school with the idea that her students would help build and maintain it. Today's students remain equally invested in taking ownership of their educations. And Berry remains equally committed to partnering with students and families to make this education — and its lifelong value — possible.



SEEK CHALLENGE.

FIND SUPPORT.

You are unique.
Your education should be the same.

HERE, YOU WILL DEVELOP A FOUR-YEAR PLAN that relates your academic interests and professional goals to relevant firsthand learning experiences.

YOU WILL BE GUIDED BY TRUSTED MENTORS who care about your goals and dreams, connect you with life-changing opportunities and consider your well-being as important as their own.

(Come see what's possible when people walking different paths come together with common purpose.)

75+ MAJORS, MINORS AND CONCENTRATIONS as well as pre-professional tracks in pre-dentistry, pre-law, pre-medicine, pre-pharmacy, pre-physician associate and pre-veterinary medicine

91% of Berry faculty members HOLD A PH.D. OR THE HIGHEST DEGREE in their field.

TOP 10% RANKING OF BERRY'S STUDENT/FACULTY INTERACTION (according to the National Survey of Student Engagement)

400 SCHOLARLY ARTICLES and **40** BOOKS published by Berry faculty over the past five years

55 scholarly articles CO-AUTHORED BY BERRY STUDENTS in the past year

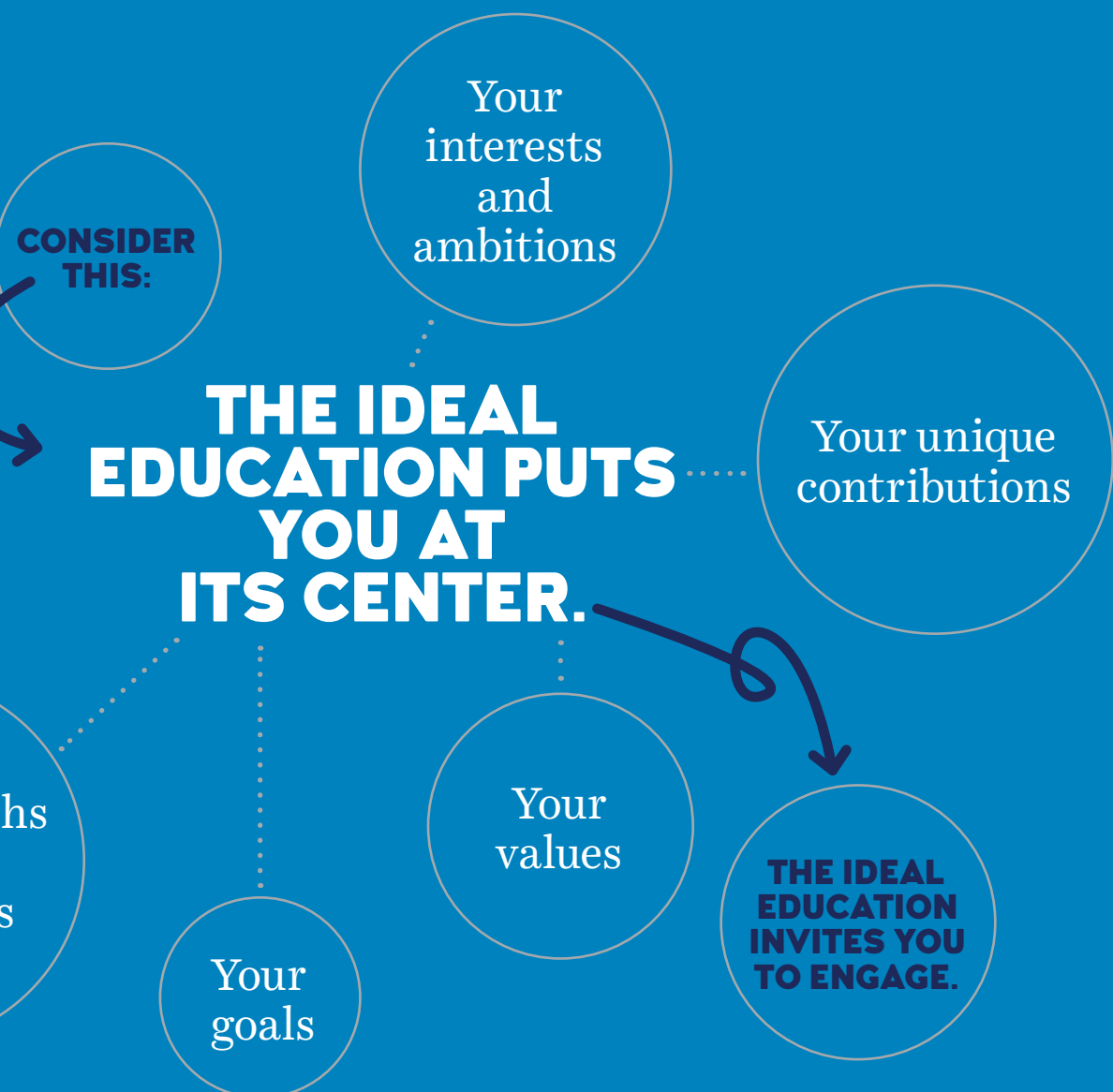
1,100 number of PRESENTATIONS BY BERRY FACULTY at major professional conferences over the past five years

190 presentations for which BERRY STUDENTS HAVE BEEN CO-PRESENTERS in the past five years

10 OFFICE HOURS (at least) per week offered by each Berry professor

47,700 OFFICE HOURS (at least) available to Berry students throughout the school year

LEARN FROM THE BEST.



MAKE THEM EVEN BETTER.



TEACHERS. MENTORS. SCHOLARS.
THEIR BEST WORK IS DONE WHEN STANDING ELBOW-TO-ELBOW WITH STUDENTS. Whatever they're teaching, thinking, making, shaping, exploring or discovering at any given time, **THEIR WORK IS ENHANCED BY YOUR CONTRIBUTIONS.**



THERE'S ONLY ONE BERRY.

Here, you'll learn how to think, write and communicate with clarity and confidence. You'll apply your learning in practical contexts, over and over, until it really sticks.

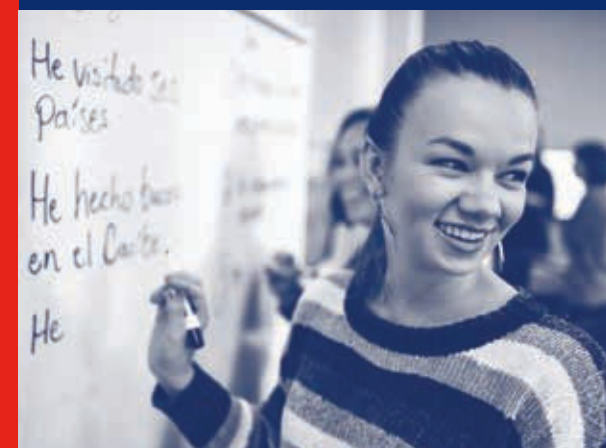
ACADEMIC EXCELLENCE (*in its many forms*) **IS THE FOUNDATION OF EVERYTHING THAT HAPPENS HERE.**

BUT IT'S EVERYTHING ELSE — distinctive experiences that amplify learning and uniquely prepare you for whatever comes next — **THAT PLACES THE BERRY EDUCATION IN A CATEGORY OF ITS OWN.** (*That's what the rest of this booklet is about.*)

BERRY'S 75+ MAJORS, MINORS, CONCENTRATIONS AND PRE-PROFESSIONAL PROGRAMS broaden your understanding, expand your intellectual toolkit and prepare you for mastery of a future that demands not only deep knowledge of your discipline but also the ability to move nimbly through an abundance of ideas and perspectives.

- Accounting
- Animal Science
- Concentrations: Pre-Vet/Pre-Professional Science
- Production Management
- Applied Behavior Analysis (minor only)
- Applied Physics
- Art
- Concentrations: Art Education, Art History, Studio Art
- Biochemistry
- Biology
- Concentrations: Cellular & Biomedical, Integrative Biology
- Wildlife, Ecology & Conservation
- Business (minor only)
- Chemistry
- Communication
- Concentrations: Communication & Media Studies
- Digital & Social Media
- Digital Storytelling
- Filmmaking & Cinematic Arts
- Public Relations
- Communication Studies (minor only)
- Computer Science
- Creative Technologies
- Creative Writing
- Dance (minor only)
- Data Analytics
- Data Science
- Economics
- Education
- Elementary, P-12/Secondary Education
- English
- Entrepreneurship & Innovation (minor only)
- Environmental Science
- Environmental Studies
- Exercise Science
- Family Studies (minor only)
- Finance
- French
- Geology (minor only)
- German
- History
- Individually Designed Major
- International Business (dual major)
- International Affairs
- Legal Studies (minor only)
- Management
- Marketing
- Mathematics
- Concentrations: Mathematics, Mathematics Education
- Music
- Music Education
- Music with Elective Studies in Business
- Music Performance
- Musical Theatre (minor only)
- One Health Science (minor only)
- Nursing
- Philosophy
- Physics
- Concentrations: Professional Track, General Physics
- Political Science
- Psychology
- Religion
- Social
- Entrepreneurship (minor only)
- Sociology & Anthropology
- Spanish
- Sport Leadership & Strategy
- Teaching English as a Foreign Language (minor only)
- Theatre
- Women's & Gender Studies (minor only)
- DUAL-DEGREE PROGRAMS**
- Engineering with Georgia Institute of Technology School of Engineering or Kennesaw State University
- PRE-PROFESSIONAL PROGRAMS**
- Pre-Dental
- Pre-Health Professions
- Pre-Law
- Pre-Medicine
- Pre-Pharmacy
- Pre-Physical Therapy
- Pre-Physician Associate
- Pre-Veterinary

See the full list (including minors and concentrations) at: BERRY.EDU/ACADEMICS/MAJORS



DESIGN A LIFE.

THROUGH BERRY'S DISTINCTIVE FOUR-YEAR EXPERIENCE, YOU'LL TAKE OWNERSHIP OF YOUR EDUCATION AND STEER IT TOWARD A PURPOSEFUL LIFE.

The BERRY JOURNEY

Guided Four-Year Learning Experiences

PHASE ONE LAUNCH

Learn the basics of personal reflection and time management in your First-Year Seminar. You'll find your footing as you explore a new place, make new friends and connect with a knowledgeable advisor. *(They'll offer guidance and support to help you clarify your interests, major and convictions.)*

PHASE TWO DESIGN

Apply the reflection skills you're honing to set goals rooted in your strengths and values. With trusted advisors and mentors, you'll also choose a set of learning experiences as distinctive as your academic, personal and professional interests. *(Understanding what matters most to you brings focus when considering the possibilities.)*

WORKING ALONGSIDE

EXTRAORDINARY MENTORS, you'll develop clarity about your academic and professional goals and align them with your personal commitments. And along the way, you'll shape a more meaningful education and accelerate your professional development and personal growth.

PHASE THREE IMMERSE

Form a better sense of your aspirations and ambitions by pressure-testing them through signature experiences including mentored research, internships, study abroad and community-based projects. *(Before determining your true north, it helps to try out a direction. Or three.)*

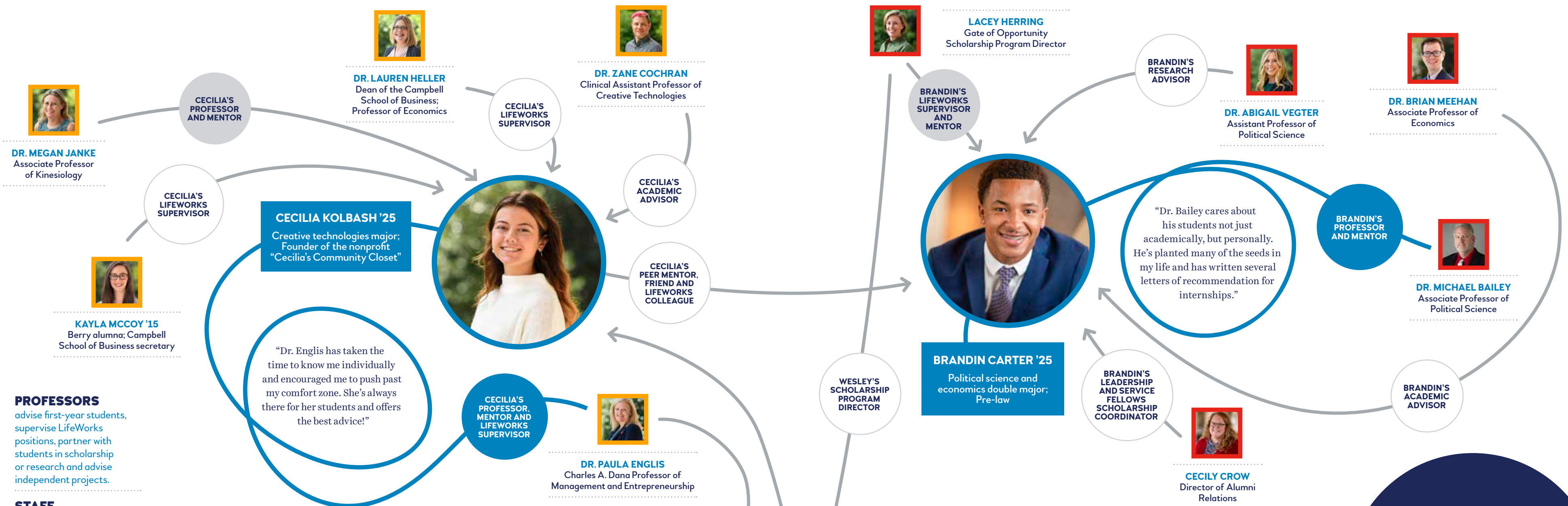
PHASE FOUR CONNECT

You've gained valuable academic, professional and personal experience. Now consider how the pieces fit together and shape a story that truly distinguishes you — one that you alone own. *(Because you'll know why the path you've chosen is important — to you, and to the world — you can move forward with purpose and confidence.)*

PRACTICE ALONG THE PATH.

CONNECT COURSEWORK AND FIRSTHAND LEARNING EXPERIENCES AS YOU BUILD A PURPOSEFUL — AND DEEPLY PERSONAL — EDUCATION.





PROFESSORS
advise first-year students, supervise LifeWorks positions, partner with students in scholarship or research and advise independent projects.

STAFF SUPERVISORS
oversee LifeWorks positions in all 180 departments, helping students build critical skills and professional experience.

COACHES
teach skills that apply on the field and everywhere else, from teamwork and time management to discipline and work ethic.

STUDENTS
support fellow students as peer mentors, workplace supervisors, resident advisors and orientation leaders.

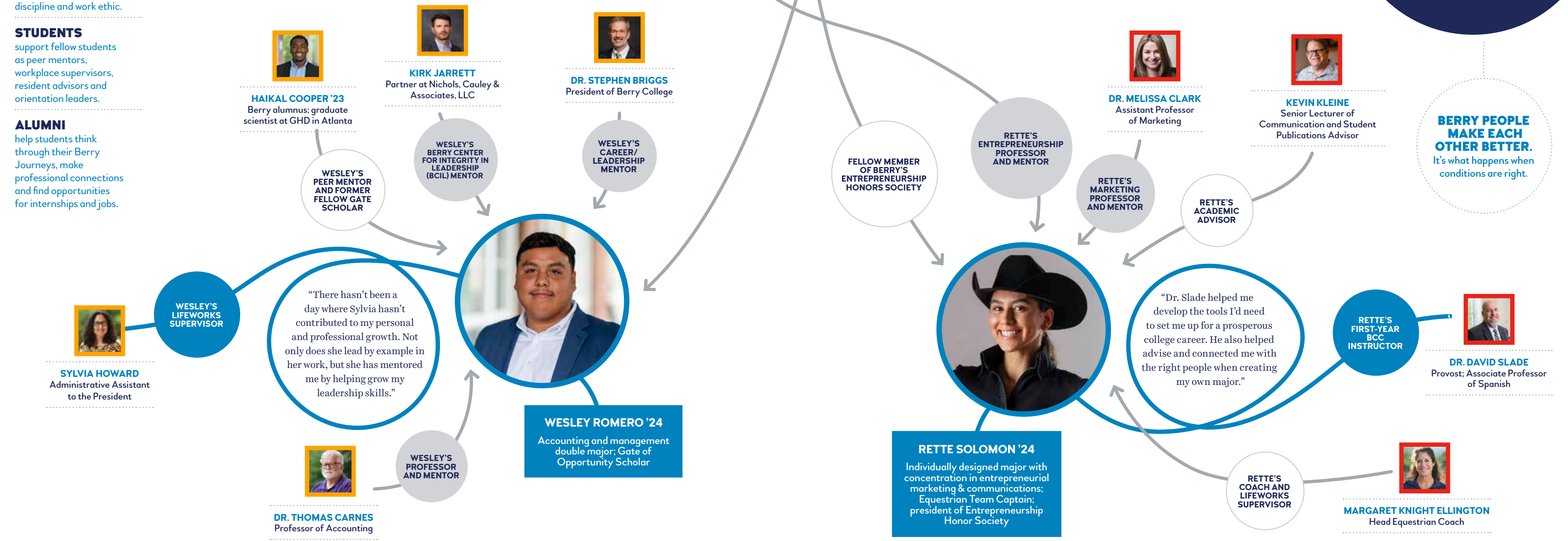
ALUMNI
help students think through their Berry Journeys, make professional connections and find opportunities for internships and jobs.

SEEK PEOPLE YOU ADMIRE.

BECOME YOUR BEST SELF.

Everywhere you look at Berry, **YOU'LL FIND MENTORS WHO ARE WILLING TO DEVOTE EXTRA TIME OUT OF THEIR OWN LIVES TO HELP YOU GET MORE OUT OF YOURS.**

BERRY PEOPLE MAKE EACH OTHER BETTER.
It's what happens when conditions are right.



EXPLORE THE WORLD.

MAKE IT YOUR OWN.

YOUR LIFE ON THIS CAMPUS

(the world's largest) will be distinguished by daily opportunities to make positive contributions — while logging invaluable professional experience.

YOUR LIFE IN THIS COMMUNITY

will be a joyful celebration of friendship and new ideas, centered around the people and pursuits you most enjoy.

YOUR LIFE AFTER BERRY

will be built on a solid foundation of knowledge, preparation and lasting connections.

(From the moment you join this community — and for the rest of your life — you'll be part of something bigger than yourself.)



1,000+
ON-CAMPUS
PROFESSIONAL
DEVELOPMENT
OPTIONS

8 HOURS
average time per week
students spend on
PROFESSIONAL
DEVELOPMENT

\$5 MILLION
ANNUAL STUDENT
PAYROLL for
LifeWorks program

97%
of students participate
in LIFEWORKS during
their four years on campus.

27,000-
ACRE CAMPUS

13:1
ACRE-TO-STUDENT
RATIO

86%
OF STUDENTS LIVE
ON CAMPUS.

70+
STUDENT-RUN
CLUBS AND
ORGANIZATIONS

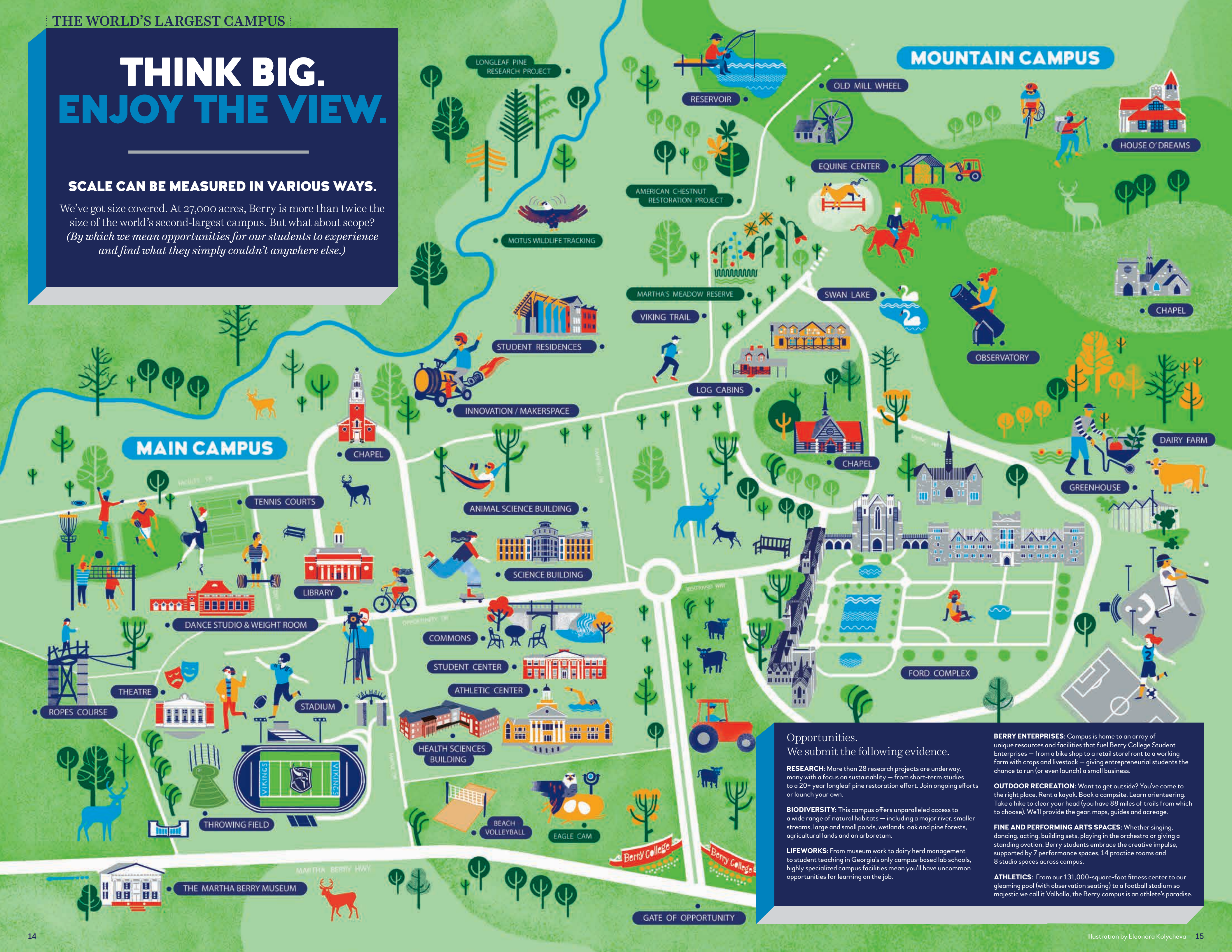
22
NCAA DIVISION III
SPORTS TEAMS

84%
OF BERRY FRESHMEN
RETURN FOR
SOPHOMORE YEAR.

THINK BIG. ENJOY THE VIEW.

SCALE CAN BE MEASURED IN VARIOUS WAYS.

We've got size covered. At 27,000 acres, Berry is more than twice the size of the world's second-largest campus. But what about scope? *(By which we mean opportunities for our students to experience and find what they simply couldn't anywhere else.)*



Opportunities. We submit the following evidence.

RESEARCH: More than 28 research projects are underway, many with a focus on sustainability — from short-term studies to a 20+ year longleaf pine restoration effort. Join ongoing efforts or launch your own.

BIODIVERSITY: This campus offers unparalleled access to a wide range of natural habitats — including a major river, smaller streams, large and small ponds, wetlands, oak and pine forests, agricultural lands and an arboretum.

LIFEWORKS: From museum work to dairy herd management to student teaching in Georgia's only campus-based lab schools, highly specialized campus facilities mean you'll have uncommon opportunities for learning on the job.

BERRY ENTERPRISES: Campus is home to an array of unique resources and facilities that fuel Berry College Student Enterprises — from a bike shop to a retail storefront to a working farm with crops and livestock — giving entrepreneurial students the chance to run (or even launch) a small business.

OUTDOOR RECREATION: Want to get outside? You've come to the right place. Rent a kayak. Book a campsite. Learn orienteering. Take a hike to clear your head (you have 88 miles of trails from which to choose). We'll provide the gear, maps, guides and acreage.

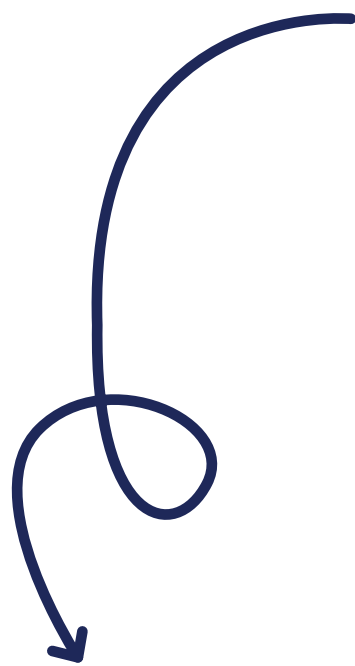
FINE AND PERFORMING ARTS SPACES: Whether singing, dancing, acting, building sets, playing in the orchestra or giving a standing ovation, Berry students embrace the creative impulse, supported by 7 performance spaces, 14 practice rooms and 8 studio spaces across campus.

ATHLETICS: From our 131,000-square-foot fitness center to our gleaming pool (with observation seating) to a football stadium so majestic we call it Valhalla, the Berry campus is an athlete's paradise.

WORK A JOB.

SINCE OUR FOUNDING, BERRY HAS THRIVED ON THE IDEA OF SHARED COMMITMENT:

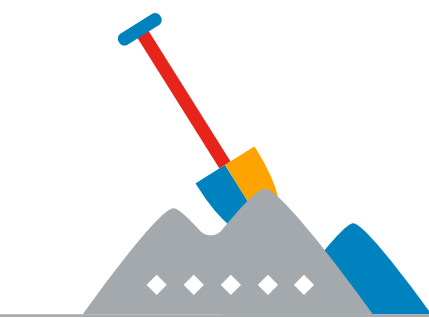
Martha Berry provided a quality education. Her students helped build the school and contribute to its daily operation.



Today, that spirit of reciprocity continues through Berry's **LifeWorks program**, which gives all students the opportunity to log **EIGHT SEMESTERS OF PROFESSIONAL DEVELOPMENT EXPERIENCE** so they earn a paycheck while learning on the job and developing into dream employees.

HOW IT WORKS

Everyone starts with a Basic (assistant) role and works their way up from there, as high as Pre-professional (program director or supervisor). Regardless of the type of work, you'll gain valuable skills and experience at every step.



Basic Experience: DIG IN

WHAT YOU DO

Whatever is needed. Answer phones, set up events, mend fences. In other words: the nuts-and-bolts business of making Berry better, productive and beautiful.

WHAT YOU GAIN

A solid backbone. Resilience. Dependability. The humility and steady work ethic that employers value.

WORK POSSIBILITIES

Student Photographer, Ceramics Studio Assistant, Outdoor Recreation Assistant, Social Media Assistant, Grounds Crew Member, Housekeeper



GLORY IS BUILT ON DOGGEDNESS.



Intermediate Experience: STEP UP

WHAT YOU DO

Take on more challenging aspects of the job, learning a specialty and working with others to achieve common goals.

WHAT YOU GAIN

Awareness of your own strengths and areas for development. Problem-solving. Managing multiple priorities. Teamwork.

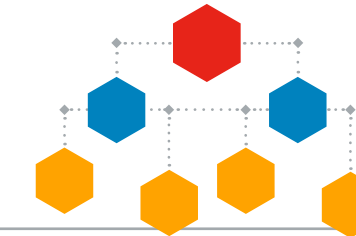
WORK POSSIBILITIES

Event Coordinator, Financial Services Associate, Ropes Course Technician, Theatre Scene Shop Technician, IT Network Operations Associate



THE BIG PICTURE COMES INTO FOCUS WHEN YOU PAY ATTENTION TO THE IMPORTANT DETAILS.

BUILD A LIFE.



Pre-professional Experience: MANAGE

WHAT YOU DO

Oversee a program. Mentor fellow student employees. Track budgets. Address challenges. Demonstrate positive results.

WHAT YOU GAIN

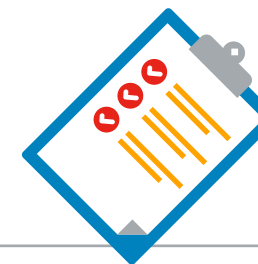
Accountability. Judgment. Fearlessness.

WORK POSSIBILITIES

Horse Barn Director, Nutrition Specialist, Computer Lab Director, Science Lab Director, Campus Ministry Director, Chief Building Supervisor, Student Admissions Director, Newspaper Editor-in-Chief, Financial Planning Analyst



THE STAKES ARE HIGHER WHEN YOU'RE MAKING THE CALLS — AS ARE THE REWARDS.



Advanced Experience: LEAD

WHAT YOU DO

Move from learning the ropes to showing others how to climb them. There's no better way to cement what you've learned than teaching it to someone else.

WHAT YOU GAIN

Responsibility. Self-confidence. Diplomacy. Discernment.

WORK POSSIBILITIES

News Producer, Chemical Inventory Lead, Advanced Peer Educator, Predictive Analytics Specialist, IT Helpdesk Lead, Athletic Concessions Lead, Coordinator of Volunteer Services, Dance Company Lead, Fitness Lead, Grounds Foreman



GUIDING OTHERS DEEPENS YOUR OWN CAPABILITIES.

Every one of Berry's 180 DEPARTMENTS EMPLOYS STUDENTS,

providing options that bolster resumes by building practical skills and intangible attributes that contribute to success in every profession.

- Academic Support and Research
- Animal Care
- Arts and Theatre
- Athletics/Fitness/Recreation
- Business Consulting
- Business Operations

- Communication and Media Arts
- Community Engagement
- Education (pre-k-8)
- Environmental Sustainability
- Event Planning
- Graphic Design

- Hospitality
- Laboratory Support
- Library Services
- Marketing
- Medical Services
- Philanthropy
- Publications — Writing/Editing

- Public Relations/Communications
- Religion/Chaplain's Office
- Skills and Crafts
- Student Services
- Technology
- Tutoring



ENCOUNTER NEW IDEAS.

THE OTHER HALF OF YOUR BERRY EDUCATION UNFOLDS BEYOND THE CLASSROOM WALLS.

You'll spend every day for four years living, learning, discussing, debating, discovering, exploring, absorbing, convening, communing and otherwise experiencing life with a concentrated gathering of smart, engaged and fascinating people.



GOOD NEIGHBORS

Berry actively works to foster a good neighbor culture. We collaborate while serving the needs of others and empowering those on the margins. We learn from conflicting perspectives. Our rich variety of VOICES, IDEAS and EXPERIENCES makes Berry A DYNAMIC PLACE TO LIVE.

OUTDOOR RECREATION

Cheaply RENT WHATEVER EQUIPMENT YOU NEED TO EXPLORE OUR STUNNING CAMPUS. Camp, hike, cycle, canoe, fish, hunt or ride horseback at Berry. Join off-campus climbing, kayaking and standup paddleboarding adventures.



FINE AND PERFORMING ARTS

The creative impulse is everywhere at Berry, from our classrooms to our makerspaces to the DOZENS OF PERFORMANCES, TALKS, FILM SCREENINGS, WORKSHOPS AND GALLERY EXHIBITS by students and visiting artists and scholars each year.

10 GALLERY SHOWS

3 MAINSTAGE THEATRICAL PRODUCTIONS

2 DANCE CONCERTS

40+ LIVE MUSIC PERFORMANCES

15 MASTERCLASSES AND SEMINARS (led by industry professionals)

65-70 LECTURES (across disciplines)

5-10 FILM SCREENINGS AND DISCUSSIONS

FITNESS



The Cage Center, a 131,000-square-foot facility, seats nearly 2,000 for varsity athletics, and also contains a natatorium with observation seating, a fitness center, racquetball courts and an indoor track. Yoga, Zumba, Barre, cycling and other classes are offered weekly. PERSONAL TRAINING IS FREE to students, either individually or in small peer groups.



RESIDENTIAL LIFE

86% OF STUDENTS LIVE ON CAMPUS, walking or biking from place to place, each residence hall a microcommunity with its own identity, spirit and pride of ownership. Resident advisors suggest resources or help you through a bad day. An absence of Greek life means A SOCIAL SCENE THAT'S OPEN AND WELCOMING TO ALL.



INTRAMURALS

Everything from basketball and soccer to pickleball and Wiffle ball; 40% OF BERRY STUDENTS RUN, KICK, SHOOT AND SHOUT THEIR WAY through approximately 600 GAMES/MATCHES/ FEATS OF STRENGTH PER YEAR.



CLUBS AND ACTIVITIES

Berry's 70+ STUDENT-RUN CLUBS and ACTIVITIES create opportunities for involvement and leadership in performing arts, government, service, media, religious life and celebration of culture.



ATHLETICS

Berry athletes are genuinely kind but fiercely competitive when the whistle blows or the first pitch flies. 22 NCAA DIVISION III VARSITY TEAMS channel the trademark Berry work ethic into thrilling effort and consistent success — to the tune of 25 CONFERENCE CHAMPIONSHIPS OVER THE PAST FIVE YEARS. Off the field, coaches, LifeWorks supervisors and professors work together to help students maintain a healthy balance of athletic schedules, on-campus work and academic commitments. Non-athlete students support Berry's teams by running game-day operations, overseeing concessions and working as athletic trainers.

It's a full-community effort. Just like everything else at Berry.

WOMEN'S	MEN'S
• BASKETBALL	• BASEBALL
• BEACH VOLLEYBALL	• BASKETBALL
• CROSS-COUNTRY	• CROSS-COUNTRY
• EQUESTRIAN	• FOOTBALL
• GOLF	• GOLF
• LACROSSE	• LACROSSE
• SOCCER	• SOCCER
• SOFTBALL	• SWIMMING & DIVING
• SWIMMING & DIVING	• TENNIS
• TENNIS	• TRACK & FIELD
• TRACK & FIELD	• VOLLEYBALL
• VOLLEYBALL	

TEST THEM EVERY DAY.

JUST IMAGINE WHO YOU'LL BE ON THE OTHER SIDE.

Spoiler alert: You'll still be you, but a version that's way more interesting, compassionate, discerning, diplomatic, responsible, empathetic, generous, insightful, open, reflective, considerate and ... we've run out of space for the rest of the adjectives.

FAITH



NONDENOMINATIONAL from the start, Berry embraces the Christian principle of CARING SERVICE, encourages FAITH and personal RESPONSIBILITY, and is WELCOMING and RESPECTFUL to those from all faith backgrounds consistent with our GOOD NEIGHBOR values.



EVENTS

Campus pulses. Especially on weekends. A well-funded student board plans and organizes more than 200 EVENTS EACH YEAR. Big days and traditions dot the calendar, from Spring Formal to Rage in the Cage to Marthapalooza (the celebration honoring our legendary founder).

KNOW WHERE YOU'RE HEADED.

THERE IS NO ONE PATH THROUGH BERRY, just a four-year inspired journey that helps make sure you'll get from day one to graduation having had the vital experiences that distinguish this education from any other.

REMEMBER YOU'LL ALWAYS BELONG.

The thrilling conclusion?

By the time you cross that graduation stage, you'll possess a strong sense of inner direction, having discovered a path that springs from your interests and values. You'll have a deep wealth of knowledge. And the skills to put it in motion. You'll be a practical thinker. And a creative one. You'll be able to understand the needs of others. And you'll know how to work with them. You'll move forward with confidence.

YOU WILL BE READY.



LIRIO MORALES IBARRA '23
Graduate Assistant, Harvard Graduate School of Education

Though initially uncertain about her path when she entered college, Lirio, a Bonner Scholar, gained a sense of direction at Berry through several opportunities that connected her learning to real-world issues. Her experiences working at a YMCA after-school program and competing in the Berry Social Impact Challenge — for which she founded a nonprofit to address local food insecurity — fueled her passion for service and helped clarify her career goals. A master's candidate in Harvard's Educational Leadership, Organizations and Entrepreneurship program, Lirio is focused on making a positive impact in her professional life.

"Long-term, my goal is to create a scalable, transformational and financially sustainable social enterprise to empower students from marginalized communities to attain educational success."



NICK FERNANDEZ '21
Marketing Manager, AdMedia, Atlanta, Georgia

At every step of his Berry Journey, Nick sought out experiences that built on his professional interests. During his senior year, he created and scaled Upway Marketing LLC — a boutique firm managing the digital presences of more than a dozen clients — with invaluable help and funding from the college's Center for Student Enterprises and Entrepreneurship Development. While managing AdMedia's brand across 12 major platforms, Nick directs the marketing efforts of the Georgia First Generation Foundation and earned their President's Volunteer Service Award.

"Taking on the entrepreneurship and innovation minor was one of my most formative Berry experiences. Professors Paula Englis and Kevin Renshler helped me take my ideas to the next level."



SYDNEY NELSON '22
M.D./Ph.D. Candidate at Vanderbilt University

A 2022 Goldwater Scholarship recipient, Sydney points to the mentorship she received at Berry as foundational in launching her research career. From her first semester on campus, she gained essential guidance while working in the lab of Associate Professor of Chemistry and Biochemistry Mark Turlington. As an M.D./Ph.D. candidate in the Medical Scientist Training Program at Vanderbilt University, Sydney eventually wants to develop diagnostic methods to better characterize diseases related to environmental exposure.

"Professor Turlington continually sought out ways for me to advance as a researcher. It was amazing to have a mentor who was as ambitious as I was from the very beginning."



DARREN BARNET '13
Actor, Santa Monica, California

Just a few years into his career, Darren — an international studies major and Gate of Opportunity Scholar — has made a name for himself in Hollywood, playing Paxton in the hit Netflix series "Never Have I Ever." He has also appeared as young Jack on the popular NBC drama "This Is Us," in addition to movie roles in *Anyone But You* and *Road House*. When not acting or developing scripts, Darren composes original hip-hop music under the stage name "Charlie Sound."

"It was the first time I felt like I found something I was truly good at," Darren said of landing the role of Joe Farkas in The Last Night of Ballyhoo at Berry. "All I wanted to do was explore it more."

INTERNSHIPS HELD BY STUDENTS IN RECENT YEARS INCLUDE:

- DELTA AIR LINES
- GEORGIA DEPARTMENT OF HEALTH AND HUMAN SERVICES
- GEORGIA DEPARTMENT OF NATURAL RESOURCES
- THE HOME DEPOT
- JACKSON SPALDING
- THE JOHNS HOPKINS HOSPITAL, NEONATAL INTENSIVE CARE UNIT
- KRAFT ANALYTICS GROUP
- MARCUS AUTISM CENTER
- NEWELL BRANDS
- OAK RIDGE NATIONAL LABORATORY
- PIRELLI TIRE NORTH AMERICA, LLC
- SHEPHERD CENTER
- SIERRA CLUB
- SMITHSONIAN INSTITUTION
- TENNESSEE AQUARIUM

GRADUATE AND PROFESSIONAL SCHOOLS WHERE BERRY GRADUATES ARE CURRENTLY STUDYING INCLUDE:

- AUBURN UNIVERSITY
- UNIVERSITY OF CINCINNATI COLLEGE - CONSERVATORY OF MUSIC
- CLEMSON UNIVERSITY
- DUKE UNIVERSITY
- EMORY UNIVERSITY
- GEORGIA INSTITUTE OF TECHNOLOGY
- MERCER SCHOOL OF MEDICINE
- STANFORD UNIVERSITY
- UNIVERSITY OF FLORIDA
- UNIVERSITY OF GEORGIA
- UNIVERSITY OF GEORGIA COLLEGE OF VETERINARY MEDICINE
- UNIVERSITY OF MICHIGAN
- UNIVERSITY OF VIRGINIA
- UNIVERSITY OF WASHINGTON IN SEATTLE
- VANDERBILT UNIVERSITY
- VIRGINIA POLYTECHNIC INSTITUTE
- WAKE FOREST UNIVERSITY

COMPANIES WHERE RECENT BERRY ALUMNI ARE CURRENTLY WORKING INCLUDE:

- AMAZON
- AON
- ARAMARK
- BUREAU OF LAND MANAGEMENT
- CHICK-FIL-A
- THE COCA-COLA COMPANY
- DELOITTE
- DUKE UNIVERSITY GLOBAL HEALTH INSTITUTE
- EMORY HEALTHCARE
- GEORGIA-PACIFIC
- THE HOME DEPOT
- THE JOHNS HOPKINS HOSPITAL
- KAISER PERMANENTE
- LL BEAN
- LABCORP
- NIKE
- STATE FARM INSURANCE
- TURNER STUDIOS
- USDA
- THE WALT DISNEY COMPANY

99% of 2023 graduates report that a Berry education led to a job or acceptance to graduate or professional school within one year.

87% completed a significant research or internship experience.

29% studied or traveled abroad.

55% held an upper-level job, logging significant managerial or supervisory experience.

Admitted to professional schools at the following rates:

MEDICINE: 86%
LAW: 100%
VETERINARY: 80%

72% of May 2023 bachelor degree recipients reported having a job or acceptance to graduate school at graduation day.

Statistics accurate as of 5/20/2024

**SEE
YOURSELF HERE.**

**KNOW ANYTHING
IS POSSIBLE.**

**COMPARISONS FAIL.
THERE'S ONLY
ONE BERRY.**

This place is a unicorn, but fortunately for you, the kind that isn't imaginary.

THE SOLUTION: Come see us. Bring your open mind and a pile of questions. We'll show you around and let you sit in on a class. Take a close look. Talk to our students. Get a sense of this culture. Even if you're not able to fully describe it.

To learn more about visiting options or to schedule a trip to meet the unicorn:
BERRY.EDU/VISIT

ADMISSION

We're on the same page, you know.

You're looking for a college that will let you explore your interests, learn and live with interesting and inspiring people, and devote yourself to the things you love best — while preparing you for success (and happiness) in life.

We're looking for smart and motivated students who want to be active participants in their own educations. People who will contribute their ideas and energy to this community. Who crave exposure to new viewpoints and experiences. Who are willing to work hard. Who are eager to dive in.

We've told you about Berry. Now it's your turn. The best applications move quickly past the grades and scores (important but not the full picture) to the essence of you as a person, student, teammate, mentor and friend.

So tell us. Who are you? What would you bring to our classrooms and community?

We can't wait to find out.
Here's the link. (Do your thing!)
BERRY.EDU/APPLY

FINANCIAL AID

Yes, college is a significant investment, and yes, there are many forms of financial help available. But let's start with the most important point:

The Berry education gives you not only a powerful degree, but also four years of professional experience — while equipping you with a network of lifelong mentors and a set of powerful skills that will distinguish you in your first job and every job thereafter.

An investment looks different when considering its value.

To help lower college costs, we offer a series of scholarships. You'll be automatically considered when you apply for admission.

We also offer need-based financial assistance to help meet the financial need of families for whom the cost of Berry poses a stretch.

For much more (and constantly updated) information on all of the above:
BERRY.EDU/AID